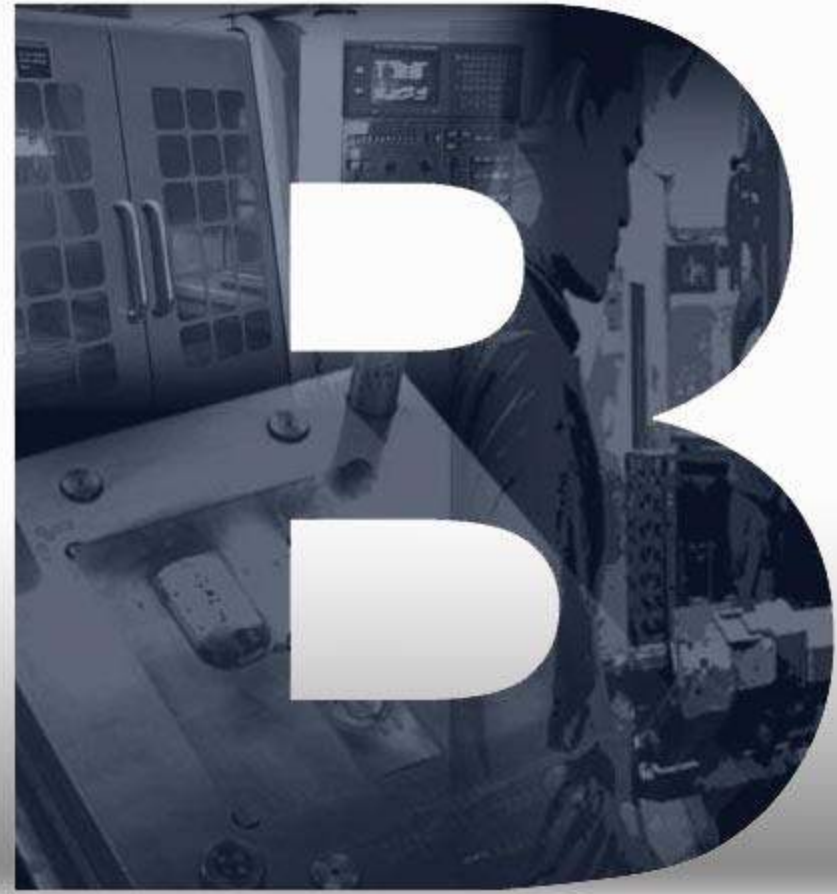
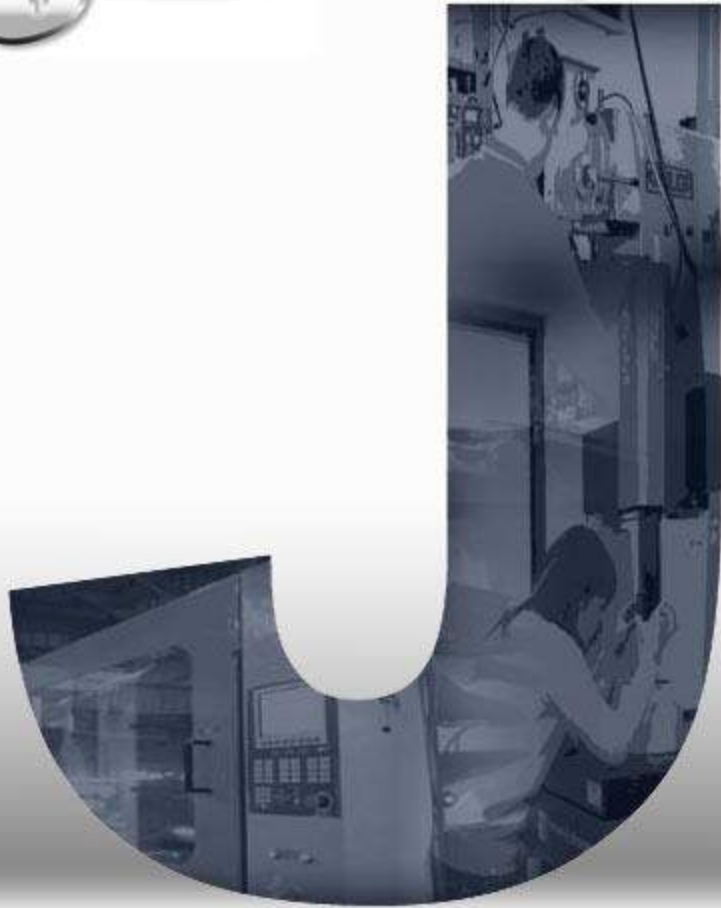


# **JB** Company Profile





# Company Mission & Policy



## ■ **Management Philosophy:**

- 1. Quality the best! Customer the first!**
- 2. Pursuit of Excellence. Sustainable management.**
- 3. Working with concerted efforts; all staffs take part in.**

## ■ **Quality Policy :**

- 1. To provide punctually, zero shortcoming, and competitive products to customers.**
- 2. Total quality management and total solution to meet the customers' demands.**



# Company Profile



## ■ Headquarters:

No.6-1, MinSheng St., TuCheng Dist., New Taipei City 23679, Taiwan

■ Website: [www.grp-jb.com](http://www.grp-jb.com)

■ Phone No.: +886-2-22697237

■ Fax No.: +886-2-22697615

■ President: Mr. Chuang, Shi-Sing (James Chuang)

■ Capital: 80,000,000 NTD

■ Facility: 10,000 Square Meters

■ Staffs: 175 (Taiwan)

■ Correspondent Bank: Taiwan Bank TuCheng Branch

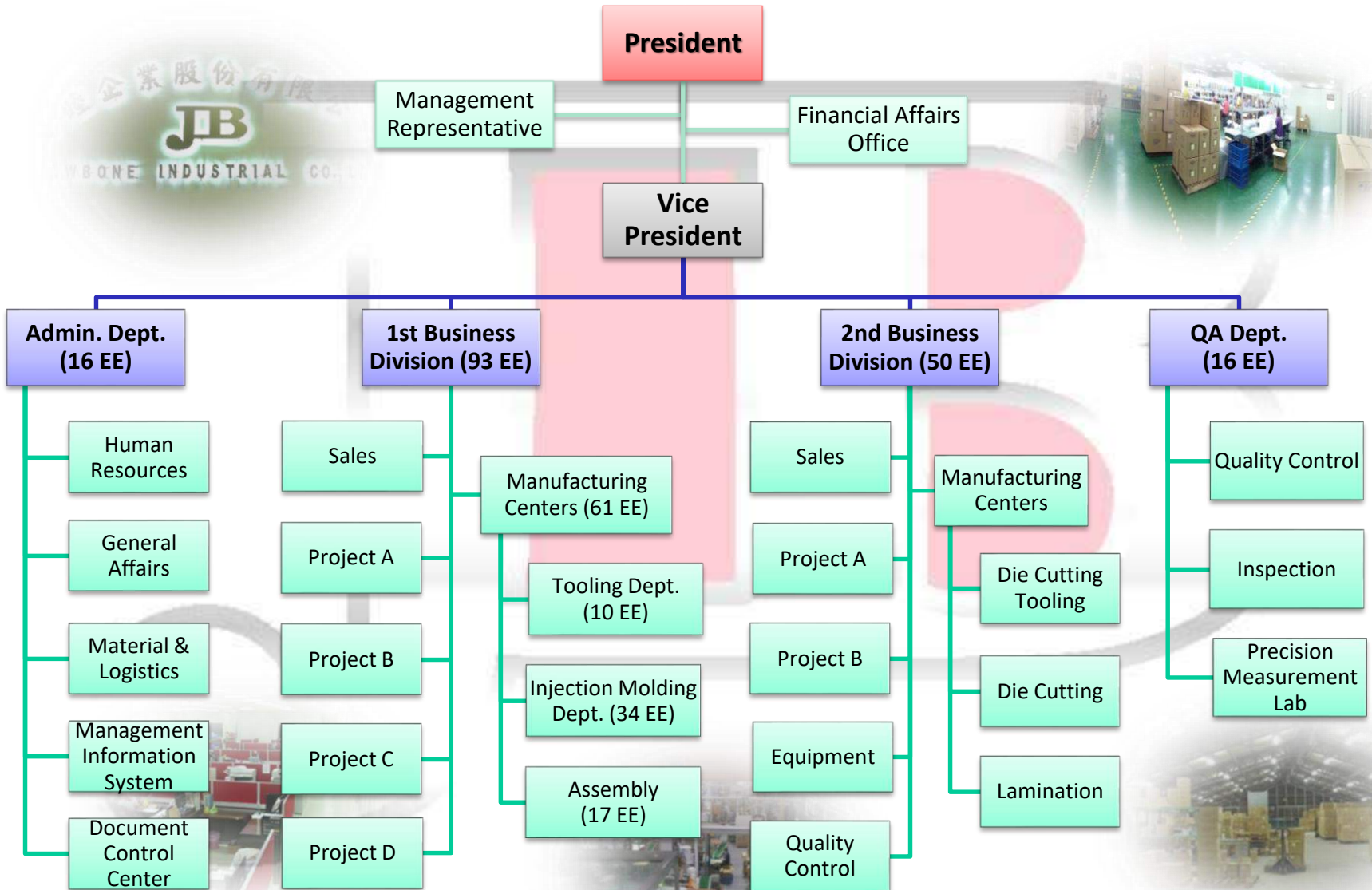
## ■ Main Business:

- Industrial Design & Consult
- Precision Mold Design & Manufacture
- Precision Molding Injection
- Product Assembly & Test
- Secondary Processing
- Machining
- Stamping





# Organization Chart









# Injection Molding Equipment 1/2



No.	Product	Brand	Model No.	Capacity/Spec.	Q'ty
1	Single Horizontal Injection Molding Machine	Victor Taichung	Vs-50/Vs-50K	50 Tons	2
2	Single Horizontal Injection Molding Machine	TOYO	Si-50-6S-BH150E	50 Tons	1
3	Single Horizontal Injection Molding Machine	Victor Taichung	Vs-80H	80 Tons	1
4	Single Horizontal Injection Molding Machine	TOYO	Si-80-6-F200HD	80 Tons	2
5	Single Horizontal Injection Molding Machine	Victor Taichung	Vs-100K/Vs-100M	100 Tons	3
6	Single Horizontal Injection Molding Machine	TOYO	Si-130-6-FH400D	130 Tons	2
7	Single Horizontal Injection Molding Machine	Victor Taichung	Vs-180F	180 Tons	1
8	Single Horizontal Injection Molding Machine	TOYO	Si-230-6-FH400D	230 Tons	1
9	Single Horizontal Injection Molding Machine	Victor Taichung	Vs-250E	250 Tons	1
10	Single Horizontal Injection Molding Machine	Victor Taichung	VR -350N	350 Tons	1
11	Single Horizontal Injection Molding Machine	Victor Taichung	VR-550R	550 Tons	1
12	Single Horizontal Injection Molding Machine	Victor Taichung	VR-850S	850 Tons	1
13	Single Vertical Injection Molding Machine	PPP-Systems	V4-SD-200T	200 Tons	1
14	Double Injection Molding Machine	Fu Chun Shin	FB-140R	140 Tons	1
15	Double Injection Molding Machine	Hwa Chin	DCW-160SE	160 Tons	1
16	Double Injection Molding Machine	Hwa Chin	DCW-250SE	250 Tons	1



# Injection Molding Equipment 2/2



No.	Product	Brand	Model No.	Capacity/Spec.	Q'ty
17	Double Injection Molding Machine	Fu Chun Shin	FB-260R	260 Tons	1
18	Double Injection Molding Machine	Hwa Chin	DCW-400SE	400 Tons	1
19	Double Injection Molding Machine	Hwa Chin	DC-600SE	600 Tons	1
20	Instant Cold/hot Mold Temperature Control Unit	Jing Hwa			1





# Molding Manufacturing Equipment 1/2



No.	Product	Brand	Model No.	Q'ty
1	CNC Machine	Yang CNC	135A	1
2	CNC Machine	Yeong Chin	1020AM	1
3	Milling Machine	Kin Yu Sai	2#	1
4	Milling Machine	Ncns	1.8#	1
5	Milling Machine	CENS	3#	1
6	Milling Machine	Yu Xiang	2HP	1
7	Milling Machine	CHEVALIER	3HP	1
8	Grinder	Chu Yuan	20A	1
9	Grinder	Yu Qing	#614	1
10	Grinder	Ching Hsiang	TSG-2550 AH	1



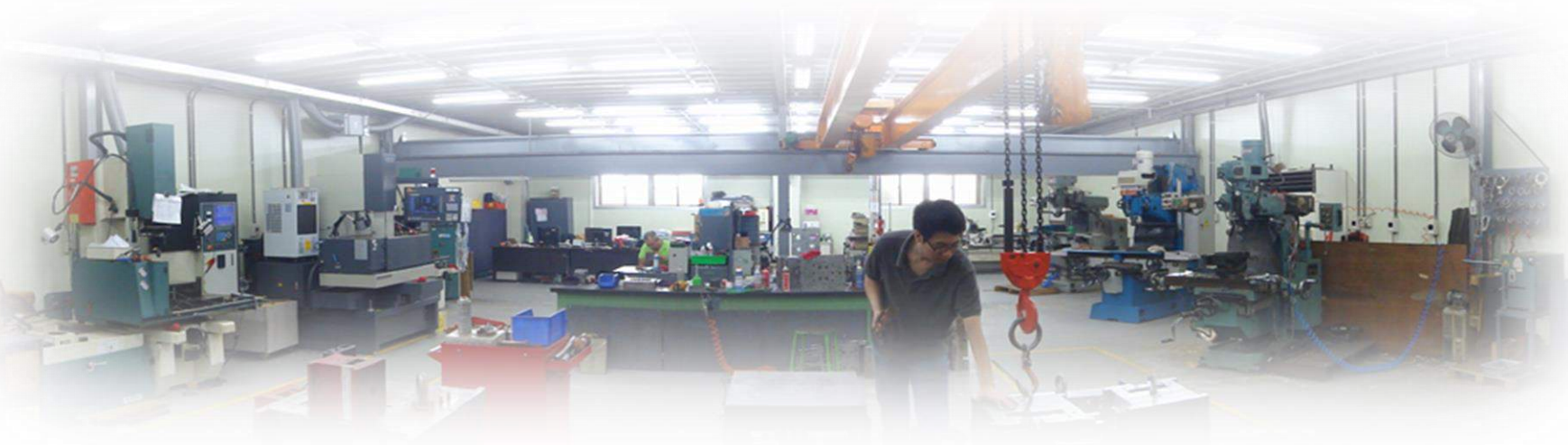




# Molding Manufacturing Equipment 2/2



No.	Product	Brand	Model No.	Q'ty
11	ZNC EDM Machine	Jiann Sheng	30A/60A	2
12	EDM Machine	ARD	M-30F	1
13	NC EDM Machine	Moldmaster	S430AS	1
14	Lathe Machine	Microweily	30A	1
15	Lathe Machine	Zeqing	RUN 330*630	1
16	Shearing Machine	SOCO	MC-275	1
17	Height Gauges	TESA Technology	700MM	1
18	Linear Height Gauges	Sing Lung Group	300MM/600MM	2





# Testing Instrument



No.	Product	Brand	Model No.	Spec.	Q'ty
1	CNC 2.5D Image Processing Measuring Instrument	Mimn Taiy	CNC-2.5D-4030	880x1010x1040 mm	1
2	3D Coordinate Measuring Machine	Brown & Sharpe	INSPECTOR 816	800x1000x600mm	1
3	Automated Vision System	Micro Vu	EXCEL 501UC	400x500x160mm	1
4	Blue Light 3D Scanner CMM	GOM	ATOS Core 300	300x230x440mm	1
5	Colorimeter	Minota	CM-2500d		1
6	Microscope	Mitutoyo	TM-510		1
7	Handheld XRF Analyzer	Niton	XLt797WZ		1
8	Temperature & Humidity test chamber	Terchy	MHU-150ASA	-40 °C ~150 °C	1
9	Temperature & Humidity test chamber	Terchy	MHK-408AK	-40 °C ~150 °C	1
10	Tensile Testing Machine	Cometech	QC-508B		1
11	Abrasion Resistant Tester	Jin Liang	A20-339		1
12	Moisture Analyzers	Shimadzu	MOC63u		1





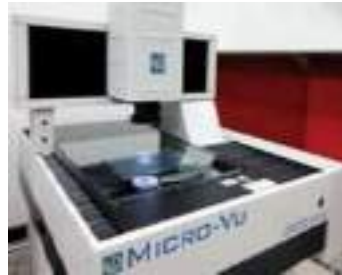
# Testing Instrument



**RI**® E323950  
T1365



CNC 2.5D Image Processing  
Measuring Instrument



Automatic Vision  
System



Automatic Coordinate  
Measuring Machine



Blue Light 3D Scanner  
CMM



Microscope



Temperature & Humidity  
Test Chamber



Color Assessment  
Cabinet



Handheld XRF Analyzer



Tensile (Compress) Strength  
Tester



Abrasion Resistant Tester



Colorimeter



Moisture Analyzers



# Assembly Instrument



No.	Instrument	Q'ty	No.	Instrument	Q'ty
1	Glue Dispenser(Manual)	3	10	Semi-Auto Filling Machine	1
2	Glue Dispenser(Automatic)	2	11	Air Press Machine (Handheld)	1
3	Ultrasonic Welding Machine	4	12	Heat-staking Machine (S)	3
4	Hand Press Machine	9	13	Heat-staking Machine (M)	4
5	Soldering Machine	4	14	Heat-staking Machine (L)	2
6	Soldering Ironing	10	15	Sealing Machine	1
7	Electrical Screw Driver	4	16	Air Press Machine	1
8	Power Supply	5	17	Assembly Line Conveyor	2
9	Drilling Machine	1	18	Self-contained Plastics Assembly Ultrasonic Welder	1







# Assembly Instrument



Glue Dispenser  
(Automatic)



Ultrasonic Welding  
Machine



Heat-staking Machine  
(L)



Heat-staking Machine  
(S)



Air Press Machine  
(Handheld)



Semi-Auto Filling  
Machine



Air Press Machine

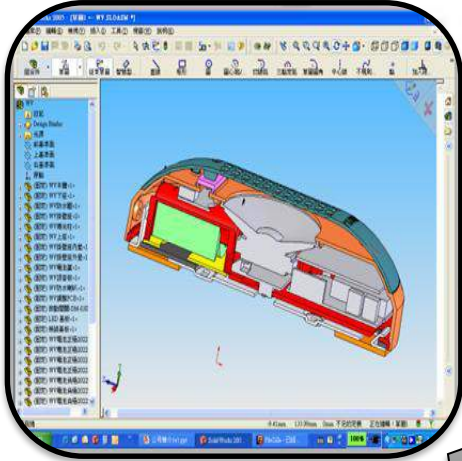


Drilling Machine





# Performance – R&D



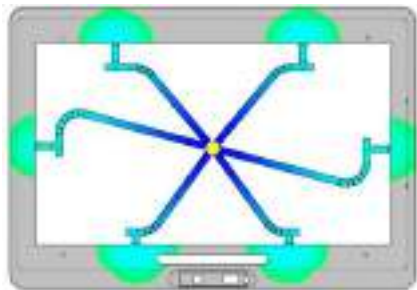
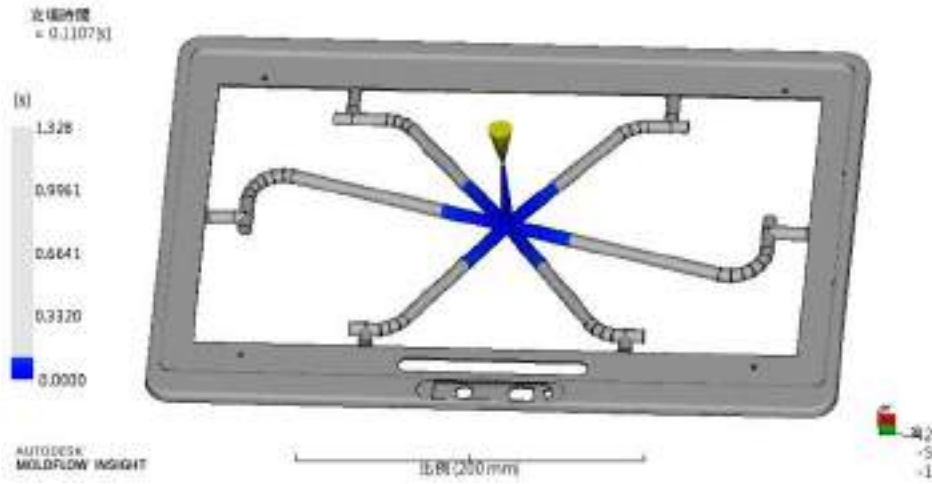




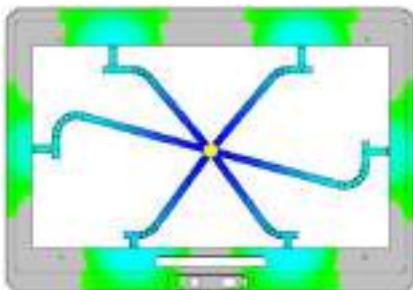
# Performance – Mold Flow Analysis



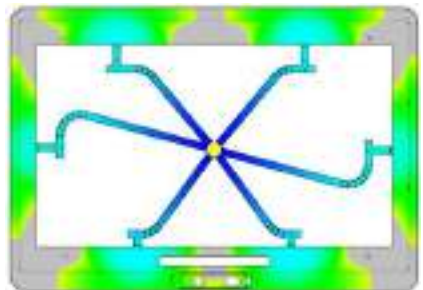
**RI**® E323950  
T1365



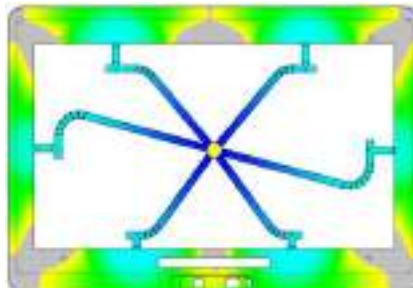
40%



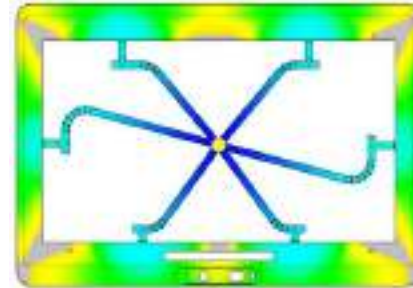
60%



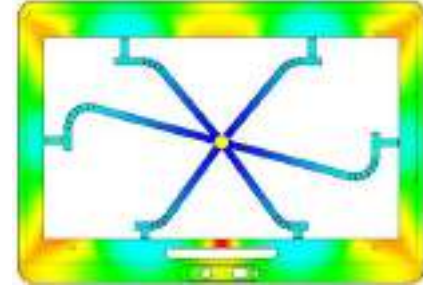
70%



80%



90%



100%





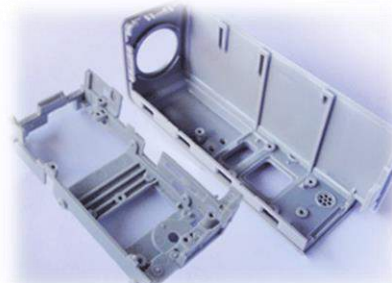
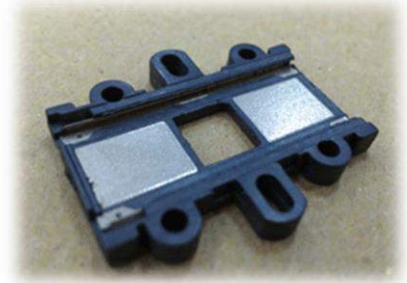
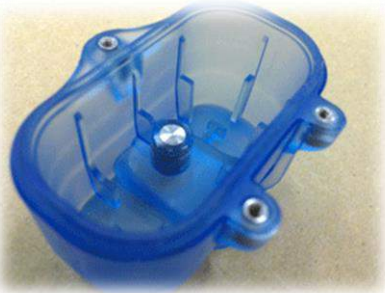


# Performance-Products





# Performance-Products





# Company Profile



**Thank You.**

***Trust JB!***

***Trust your Trust!***